



## Flowrox Packaged Pumping Systems™

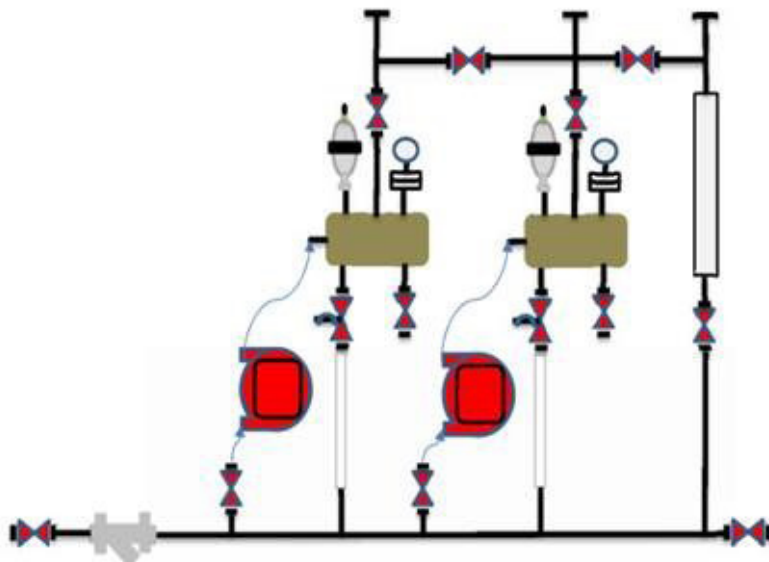
*Comprehensive engineered packages to ensure simple start-up on site*

Flowrox Packaged Pumping Systems™ are engineered units equipped with simple site connections to ensure ease of installation and start-up on site. While the system is designed for ease of use, it can be customized to suit your needs. Flowrox Packaged Pumping Systems™ provide accurate and repeatable flow while reducing maintenance time and cost.

These systems have many control options integrated in them to meet the needs of the facility control philosophy. Flowrox offers a variety of pumps to meet the demands of your application including rolling peristaltic pumps and progressive cavity pumps.

Integrated containment offers superior operational safety in aggressive chemical applications. One of the many convenient features of the Flowrox Packaged Pumping Systems™ is the pin connector hook up. This allows for a quick disconnect between the pump and skid mounted terminal box for control wiring, allowing the pumps to be removed for calibration or cleaning. Ease of start-up and installation on site paired with highly efficient and innovative peristaltic pumps results in a superior comprehensive Packaged Pumping System™.

Save time, maintenance resources and enhance safety. Just plug and play.



Flowrox Packaged Pumping Systems™ diagram. All necessary connections mounted inside the skid.

### CUSTOMER BENEFIT

Low total cost of ownership



Ease of customization



Limited maintainable wear items



High cycle or elevated operating temperatures



Long service intervals



Low energy consumption





# Comprehensive engineered packages to ensure simple start-up on site ”

## Standard Auxiliaries

Each pumping system can be equipped with the following features:

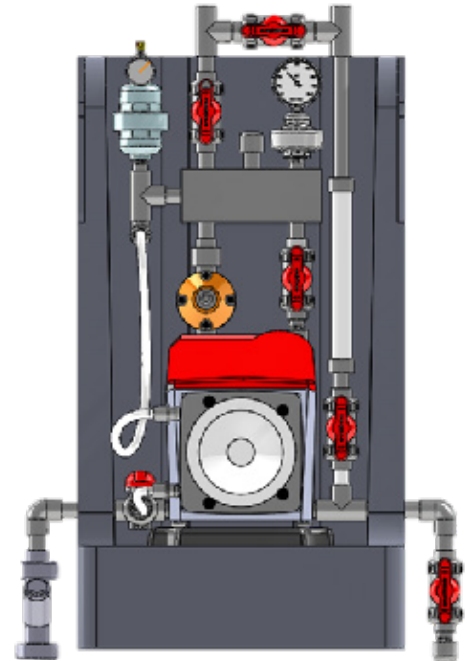
- Wye Strainer
- Isolation Ball Valves
- Suction/Discharge unions
- Calibration Column
- Auxiliary Manifold Block
- Flared Quick Liquid Pump Connections
- Pressure Relief Valve
- Pressure Gauge with Diaphragm Isolator
- Pulsation Dampener
- Flush Valves
- Control/Power Termination Panel/Nema4x
- Pin Connector Quick Disconnect Control Cabels

## Construction

- Rotationally molded polyethylene containment skids
- Polyethylene pump stands
- Heavey duty corrosion resistant plastic pipe supports
- Preformed drainage port
- Welded steel frame packages available
- Spray shield as an option

## Common Applications Include:

- Sodium Hypochlorite
- Lime Slurry
- Alum
- Ferric Chloride
- Sodium Bisulfite
- Reagents
- Sodium Hydroxide
- Caustic
- Propylene Glycol
- Citric Acid
- Defoaming Agents



Simplex Wall Mount Pumping System, also available as Duplex (two pumps), Triplex (three pumps) and Quad (four pumps) customized for your process specifications.



**OUR CUSTOMER:** Camden Water Department  
**MEDIUM:** Chlorination and Dechlorination  
**OBJECTIVE:** Eliminating chemical spills



A water treatment plant located in Camden, TN, USA, added a Flowrox chlorination and dechlorination pumping package to their process. Flowrox worked with the engineering company to design and install the pumping systems. The robust design and the easy to use pump controls resulted in a seamless installation for the contractor. The added benefit of the integrated hose leak detection and wall mount with spill containment lip on the skid will help Camden Water Department to eliminate chemical spills. Flowrox delivered a complete Packaged Pumping Systems™ including the pumping systems, auxiliaries and tanks.



Flowrox Oy  
PO BOX 338, FI-53101 Lappeenranta  
Marssitie 1, FI-53600 Lappeenranta  
Finland  
Tel. +358 201 113 311

www.flowrox.com  
info@flowrox.com

